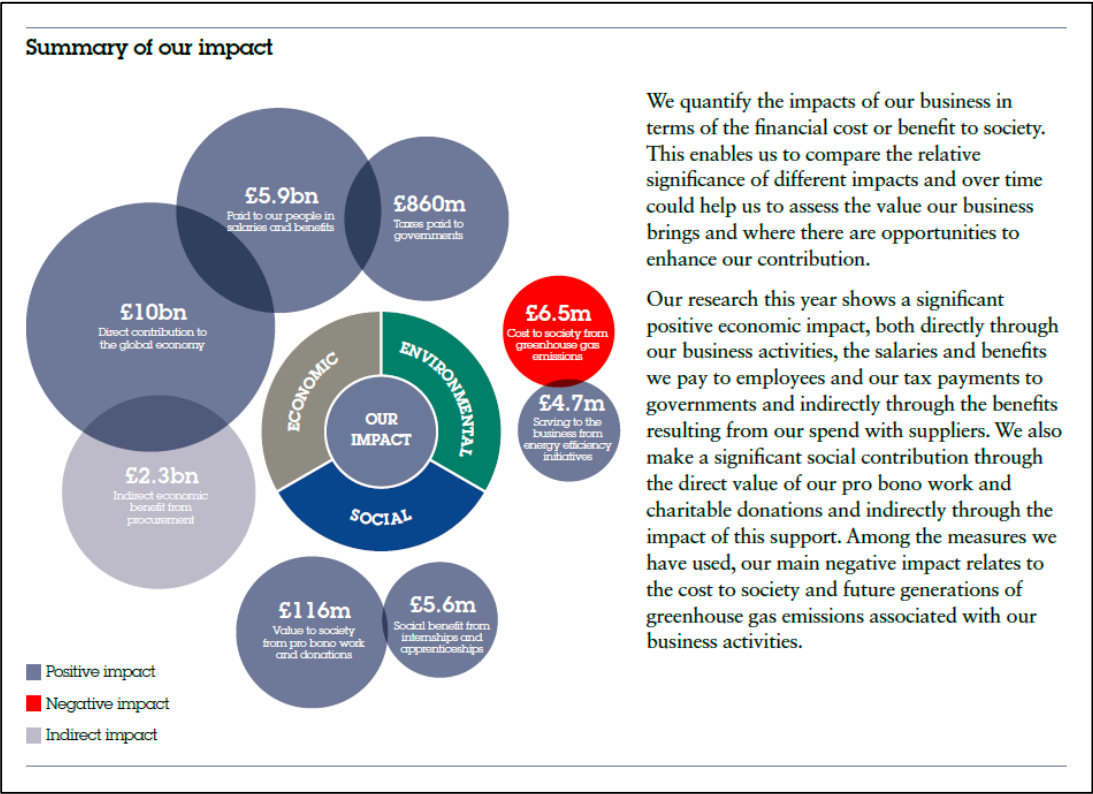


# Good practices in sustainability reporting

## Tip 4#: Balanced reporting

### Private sector



WPP,  
Sustainability  
Report 2014-  
15, p14

Environment			
Water savings – MCM – 2.49	✓	Early commissioning of innovative water recovery initiatives and implementation of water resource management plan have led to a water saving of 7.38 MCM	Water savings – 2.39 MCM
Energy savings – m GJ – 0.87	✓	Internal benchmarking and technological process intervention have led to an energy savings of 0.92 million GJ	Energy savings – 0.88 MCM
Report on Scope 3 emissions disclosure by 2015–16	–	Subsidiary businesses established the systems and started reporting Scope 3 emissions internally	Report on Scope 3 emissions disclosure by 2015–16: Corporate to internally confirm the robustness of Scope 3 data
Initiation of high-risk Biodiversity Management Plans (BMPs) across all sites	–	All our sites either have BMP in place or in preparation to meet our FY 2015–16 target	By 2015–16, all sites to have BMP in place
Continue to monitor new projects and site closures as per the Sustainable Development Framework	✓	All existing greenfield and brownfield projects at Zinc International, KCM and HZL subsidiaries are being managed as per Vedanta Sustainable Development Framework guidelines. Further, the Lisheen site closure plan has been put in place in compliance with the Framework.	Continue to monitor new projects and site closures as per the Sustainable Development Framework
5% increase in non-hazardous waste recycling tonnage as compared to FY 2014 Total recycling tonnage – 8 million MT	✗	5.76 million MT of non-hazardous waste was recycled against the targeted 8 million MT. The decrease in recycling is the result of increased generation and decreased utilisation of fly ash.	Explore opportunities and areas to increase the fly ash utilisation rate
<b>Status</b>			
✓ Achieved    – In progress    ✗ Not achieved			

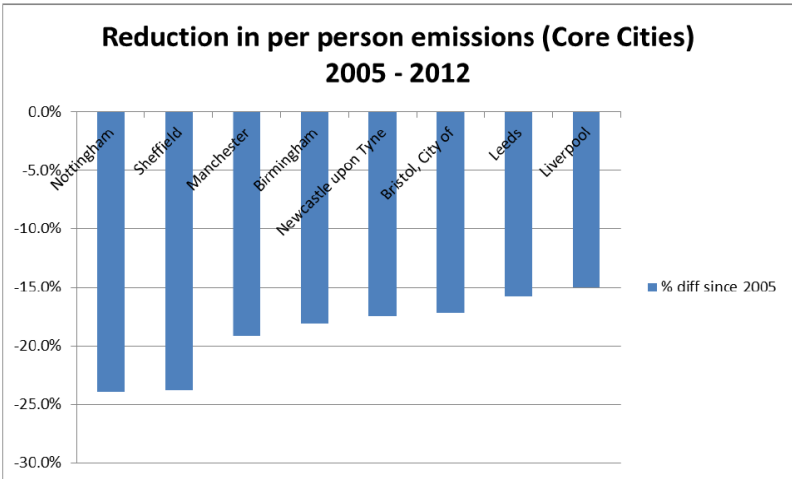
Vedanta  
Resources,  
Sustainable  
Development  
Report 2014-  
15, p18

If you would like to discuss your sustainability reporting, please speak to your usual PwC contact, or email [info@corporatereporting.com](mailto:info@corporatereporting.com)  
PwC has a strong network of people who can advise on all aspects of your corporate reporting, as well as share our unique insight into the needs of the investment community.

# Good practices in sustainability reporting

## Tip 4#: Balanced reporting

### Public sector



Nottingham  
City Council,  
Carbon  
Performance  
Plan 2014, p4

2.11 Nottingham performs very well when compared to other Core Cities. It has the lowest total carbon emissions of all Core Cities, and the second highest reduction since the baseline year of 2005. It has the highest level per capita CO<sub>2</sub> reductions of all the Core Cities. Using DECC future energy estimates it is projected that City CO<sub>2</sub> emissions will fall to 28% of the 2005 baseline by 2020.

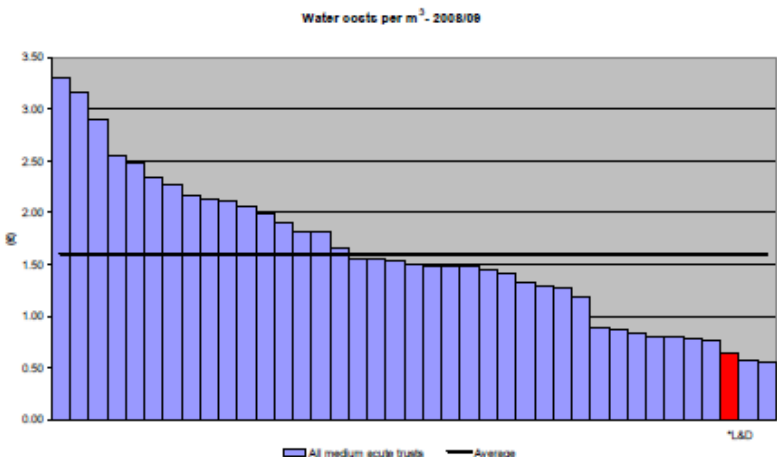
#### Background

In 2007/08, the NHS in England consumed an estimated 38.8 million cubic metres of water and generated approximately 26.3 million cubic metres of sewage at an approximate cost of £145 million<sup>10</sup>. In addition, it has been estimated that over 10% of all water is lost through leakages once it has left the water suppliers infrastructure.

#### Local arrangements

In 2009/10, it is estimated that the Trust's consumption will be 110,000 cubic metres of water and roughly the same amount of sewage. The combined cost of water and sewage is estimated at approximately £140,000 per annum<sup>11</sup>. For 2008/09, the cost per m<sup>3</sup> equates to 63 pence, which is one of the lowest costs compared to other comparable trusts (see Figure 4 below).

Figure 4 - Water cost per m<sup>3</sup> – 2008/09



<sup>10</sup> Source: ERIC data returns 2008/09

Luton and Dunstable  
University Hospital,  
Sustainable Development  
Management Plan, p20

---

*This publication has been prepared for general guidance on matters of interest only, and does not constitute professional advice. You should not act upon the information contained in this publication without obtaining specific professional advice. No representation or warranty (express or implied) is given as to the accuracy or completeness of the information contained in this publication, and, to the extent permitted by law, PricewaterhouseCoopers LLP, its members, employees and agents do not accept or assume any liability, responsibility or duty of care for any consequences of you or anyone else acting, or refraining to act, in reliance on the information contained in this publication or for any decision based on it.*

© 2015 PricewaterhouseCoopers LLP. All rights reserved. In this document, 'PwC' refers to the UK member firm, and may sometimes refer to the PwC network. Each member firm is a separate legal entity. Please see [www.pwc.com/structure](http://www.pwc.com/structure) for further details.