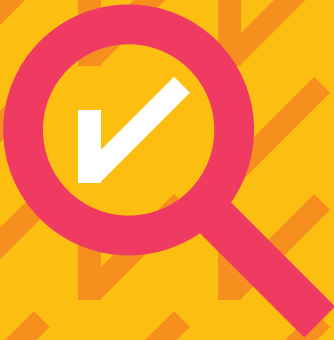


pwc.co.uk/ixbri

iXBRL managed tagging service

Converting your statutory financial statements into iXBRL format

Winter 2021



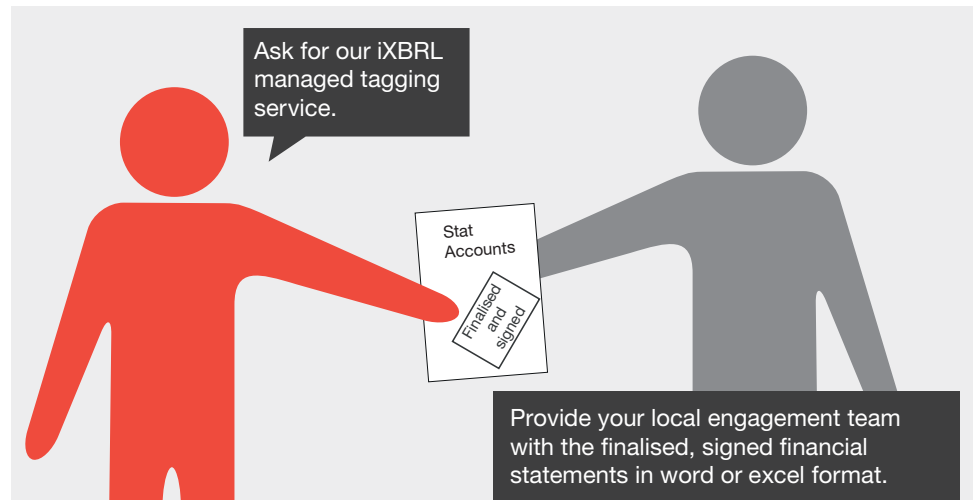
iXBRL tagging

HMRC requires statutory financial statements to be filed in Inline XBRL format. Tagging is a matchmaking process with skilled people using software to match items in the financial statements to a list of XBRL tags. Our managed tagging service can convert your financial statements.

The challenge



The solution



Our specialist team selects and applies iXBRL tags

records any judgements made

reviews the tagging

and tests the file on HMRC's Gateway.

Blueprint

PROFIT AND LOSS ACCOUNT For the year ended 31 December

Note		CY £	PR £
Turnover - continuing operations 1	16,613,351	15,190,014	
Cost of sales	(3,819,379)	(5,024,461)	
Gross profit	2,793,972	2,670,260	
Distribution costs	(237,782)	(260,491)	
Administrative expenses	(662,719)	(7,257,884)	
Operating profit - continuing operations 2	1,709,873	(3,857,288)	
Interest receivable	372	1,911	
Interest payable and similar charges 4	(81,140)	(112,016)	
Profit on ordinary activities before taxation	1,628,896	(2,967,393)	
Tax on profit on ordinary activities 5	(212,420)	(637,171)	
Profit on ordinary activities after taxation	1,416,476	(899,581)	

- 11 Turnover (gross operating revenue)
- 12 Cost of sales
- 13 Gross profit (loss)
- 14 Distribution costs
- 15 Administrative expenses
- 16 Operating profit (loss)
- 17 Other interest receivable and similar income
- 18 Interest payable and similar charges
- 19 Profit (loss) on ordinary activities before tax
- 20 Tax on profit or loss on ordinary activities
- 21 Profit (loss) for the period

Test Certificate

HMRC iXBRL Accounts E-Filed
Certificate
(Test in Live Server)
for

AAAAA Limited
Company No: 87564321

HMRC «Timestamp: 2014-09-10T 10:44:23.173 (YYYY-MM-DDTHH:SS.SSS)

No. of Records: 1

Congratulations: Your HMRC iXBRL Accounts document has been successfully submitted by Internet to the EIS Revenue & Customs Live Test Server and passed with no error messages

HMRC iXBRL Accounts E-Filed

1

Submitter Name AAAAA Limited

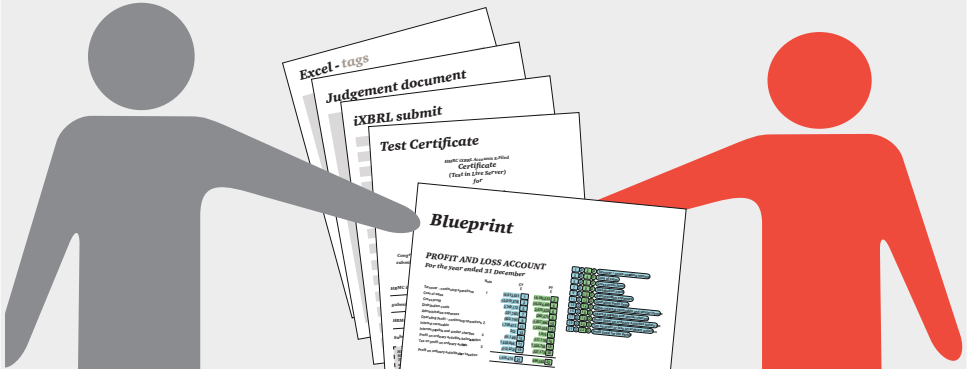
HMRC Ref FC307E1FD5C847ED8267F9CB7814

Submission Status SUBMITTED SUCCESSFULLY

HMRC Digital Receipt (Remark)
HMRC has received the HMRC-CT-CY690-01 document ref: 90827701 at 10:44 on 10/09/2014.
The associated iXBRL was: THIS IS A TEST/NO: NO SUBMISSION HAS BEEN MADE - This submission would have been successfully processed if not under non-test conditions. Thank you!
for your submission.

Everything is sent to your local engagement team for further review.

We deliver what you need and discuss it with you.



The iXBRL tagging is ready for you to review and submit to HMRC with your Corporate Tax return.

If you would like further information, please speak with your usual engagement team, or alternatively contact one of our team. Our details are on the next page.

Contacts

London

Jon Rowden – XBRL Assurance Leader
jon.c.rowden@pwc.com

Kashi Booluck
kashi.booluck@pwc.com

Bansi Shah
bansi.shah@pwc.com

North

Edward Moss
edward.t.moss@pwc.com

Northern Ireland

Sarah McClenaghan
sarah.mcclenaghan@pwc.com

Channel Islands

Nick Vermeulen
nick.vermeulen@pwc.com

This publication has been prepared for general guidance on matters of interest only, and does not constitute professional advice. You should not act upon the information contained in this publication without obtaining specific professional advice. No representation or warranty (express or implied) is given as to the accuracy or completeness of the information contained in this publication, and, to the extent permitted by law, PricewaterhouseCoopers LLP, its members, employees and agents do not accept or assume any liability, responsibility or duty of care for any consequences of you or anyone else acting, or refraining to act, in reliance on the information contained in this publication or for any decision based on it.

© 2021 PricewaterhouseCoopers LLP. All rights reserved. 'PwC' refers to the UK member firm, and may sometimes refer to the PwC network. Each member firm is a separate legal entity. Please see www.pwc.com/structure for further details.

2021-11-29_RITM6854077

